

LONG POINT PROVINCIAL PARK REPTILE BARRIER



The Carolinian Region of southern Ontario is home to 23 native reptile species, of which 19 can be found in the Long Point Basin. While the region is an important refuge for reptiles, six of seven turtle species, and six of 12 snake species found locally are listed as being at risk. Long Point Provincial Park and the Long Point Basin Land Trust have identified road mortality within the park as a serious threat to these reptiles and are working together to make the park safer for these animals.

What is the fencing for?

Long Point Provincial Park is home to a great number and diversity of turtles and snakes. These reptiles frequently cross the road or bask on it for warmth within the park. Unfortunately, this puts them in danger and many are killed. Reptile fencing has been installed in priority areas where the highest levels of mortality were recorded. The fencing acts as a physical barrier to prevent reptiles from moving onto roads and potentially being struck by vehicles. During spring

and fall, when the park is closed, gates in the fence will be opened to allow reptiles, amphibians and other wildlife to travel more freely and to allow seasonal movements.

Turtles of the Long Point Basin and their conservation status:

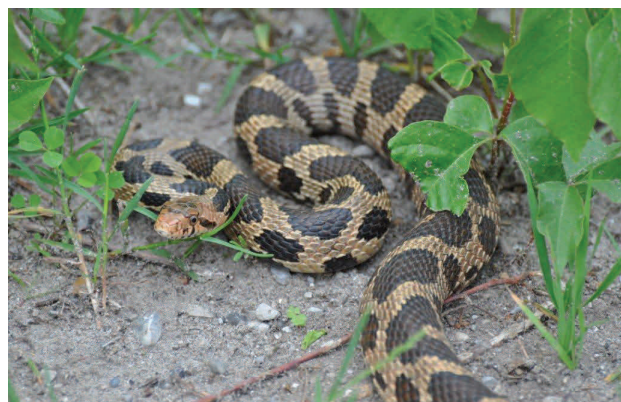
- Spotted Turtle - *Endangered*
- Blanding's Turtle - *Threatened*
- Musk Turtle (or "Stinkpot") - *Threatened*
- Spiny Softshell Turtle - *Threatened*
- Northern Map Turtle - *Special Concern*
- Snapping Turtle - *Special Concern*
- Midland Painted Turtle

Snakes of the Long Point Basin and their conservation status:

- Eastern Foxsnake - *Endangered*
- Gray Ratsnake - *Endangered*
- Queensnake - *Endangered*
- Eastern Hog-nosed Snake - *Threatened*
- Milksnake - *Special Concern*
- Eastern Ribbonsnake - *Special Concern*
- DeKay's Brownsnake
- Red-bellied Snake
- Northern Ring-necked Snake
- Eastern Gartersnake
- Northern Watersnake
- Smooth Greensnake



Installation of the wildlife fencing. Photo: Gregor Beck



An Eastern Foxsnake perilously close to a busy road. Photo: Gregor Beck



Long Point Basin Land Trust
P.O. Box 468
Port Rowan, Ontario N0E 1M0
Email: nature@longpointlandtrust.ca
Web: longpointlandtrust.ca

Follow Long Point Basin Land Trust on Twitter (@lpblt) or become a fan on Facebook.

