

Venison Creek, Norfolk County



2024-2025 Annual Report

Table of Contents:

Land Acknowledgement.....	1	Featured Reserve	9
Leadership Message.....	2	Explore the Outdoors	10
Our Impact	3	Financial Summary.....	11-12
Stewardship & Restoration	4	Our Supporters	13
Newly Protected Properties	5-8	Board of Directors	14



Land Acknowledgement

We acknowledge that the lands we connect to and thrive on in the Long Point basin are treaty lands and traditional territory of the Mississaugas of the Credit First Nation. The Mississaugas are an Anishinaabe people. These lands are also the traditional territory of the Neutral, Wendat and Haudenosaunee peoples.

For thousands of years, First Nations people have been stewarding this special area of natural abundance. We recognize and deeply appreciate their knowledge and care of these lands and we are committed to respecting and welcoming the rights and responsibilities of Indigenous Peoples, working in the spirit of reconciliation.

Leadership Message

Growing Our Impact

We are so grateful for the incredible support from our donors, volunteers, partners and supporters in making this another successful year. We continued to grow our network of protected lands by adding 59.3 hectares (146.6 acres) in two new nature reserves and made substantive progress in enhancing existing nature reserves so that native biodiversity can thrive.

Thanks to staff, contractors and our incredible volunteers we enhanced over 100 hectares (247 acres) through controlling invasive species, managing succession for savanna habitat and habitat restoration. This impact has been magnified by working with numerous partners through the Long Point Walsingham Forest

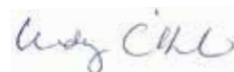
Priority Place initiative, which recognizes and supports this area's tremendous biodiversity and numerous species at risk.

We continued to welcome people to engage with nature through Explore the Outdoors events, volunteer activities, new interpretive signs and maintained trails.

During the past year we strengthened our local partnerships, welcomed new leadership, and advanced restoration and stewardship efforts that are vital to addressing biodiversity loss and climate change. These accomplishments reflect the dedication and shared commitment of everyone contributing to this work. Thank you!



Peter Carson,
President



Wendy Cridland,
Executive Director





Our Impact

59.3 Hectares

(147 acres) **protected** in 2024-25 within 2 new nature reserves

58.6 Hectares

(145 acres) of savanna, oak woodland and meadow **enhanced** through conifer thinning and invasive plant control

486 Total Hectares

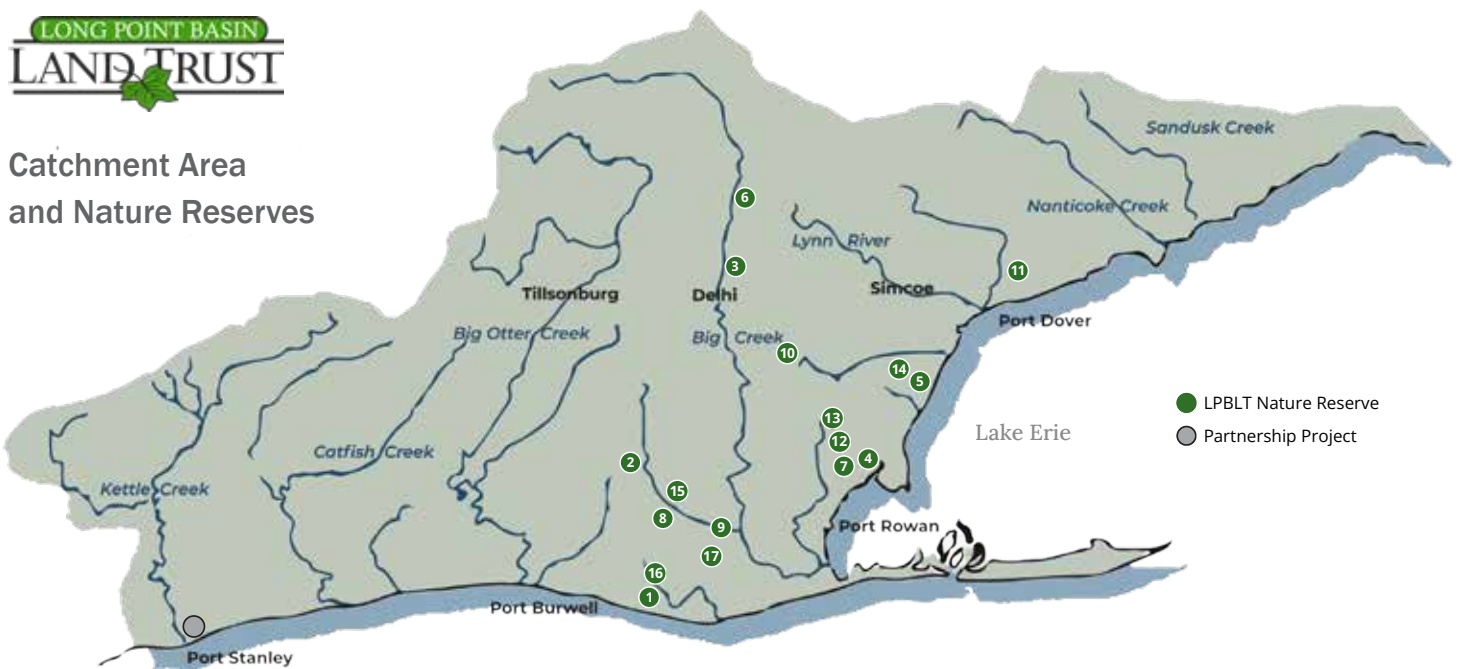
(1201 acres) **protected and managed** in nature reserves across the basin

50.5 Hectares

(125 acres) of forest, swamp, wetland and riparian area **enhanced** through removal of invasive plants and managing access



Catchment Area and Nature Reserves



- 1) Jackson-Gunn Old Growth Forest
- 2) Arthur Langford Nature Reserve
- 3) Delhi Wetland Nature Reserve
- 4) Shirley & George Pond Nature Reserve
- 5) Strongman-Guiler Conservation Legacy
- 6) Marshall Malcolm Wetland Reserve

- 7) Al (Pic) & Pat Robinson Nature Reserve
- 8) Spring Arbour Farm Nature Reserve
- 9) Stead Scientific Reserve
- 10) Trout Creek Nature Reserve
- 11) Hammond Hemlock Slough Reserve
- 12) Harlow Dune Nature Reserve

- 13) Stackhouse Forest Sanctuary
- 14) Fred Jonckheere Fishers Creek Reserve
- 15) Sand Prairie Savanna Nature Reserve
- 16) Alton Family Nature Reserve
- 17) DeCloet Family Forest Legacy



Stewardship & Restoration



Restoring Biodiversity in the Basin

The Land Trust's work to safeguard biodiversity is fostering the recovery of oak savanna ecosystems – fire-influenced landscapes that support a remarkable diversity of plants

and pollinators. Stewardship actions are maintaining open habitat with low tree cover that encourages the resurgence of native prairie plants such as New Jersey Tea and Wild Lupine, creating conditions needed for butterfly species such as the Mottled Duskywing and Karner Blue to return.



The Tree Amigos volunteers: Ron Shrubbs, John Wellhauser, Gerry McLellan with staff Lindsay Smith.

Harlow Dune Nature Reserve is a rich mix of mature swamp forest, oak woodland, savanna and dry sand barren. Our volunteer superstars, the Tree Amigos, and staff Lindsay Smith continued oak savanna restoration through thinning over 3 hectares of conifers to increase sandy openings favoured by a wide variety of prairie insects and plants. Work also included invasive species control and the removal of a building to further enhance natural habitat on the site.



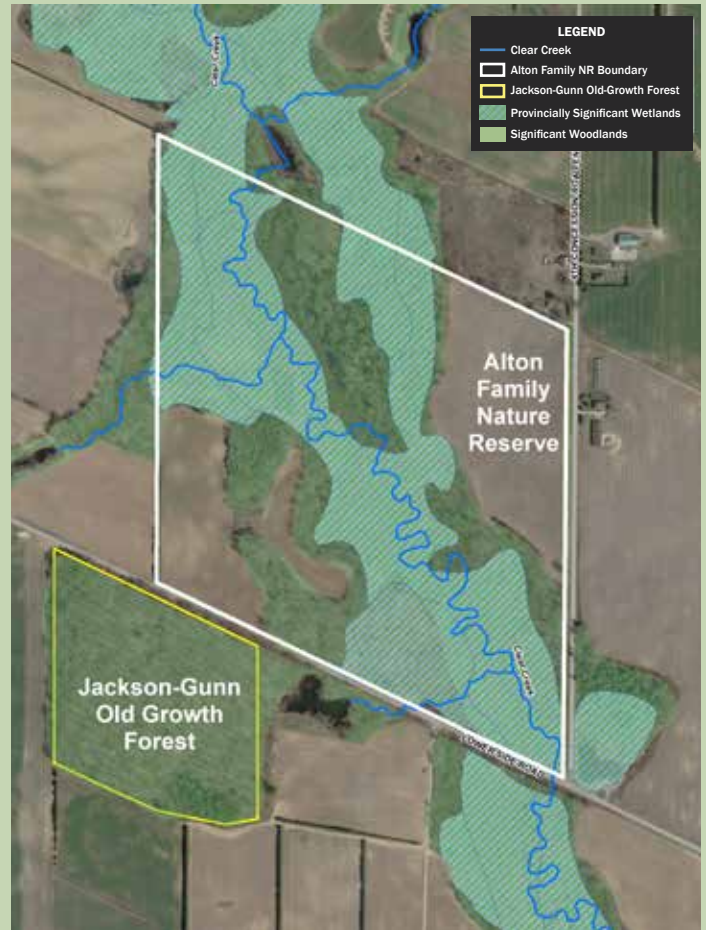
Newly Protected

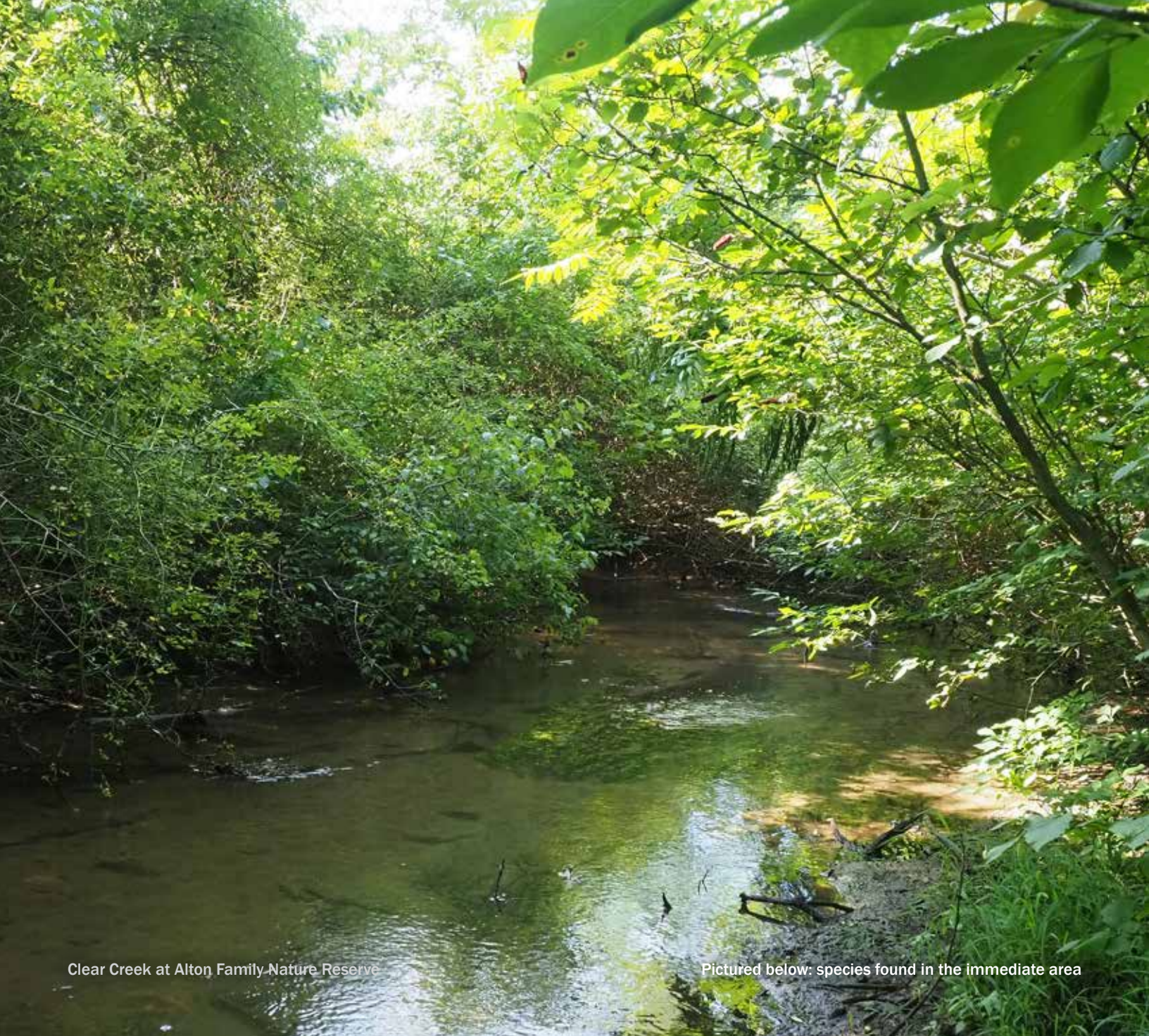
Alton Family Nature Reserve

The 102.3-acre Alton Family Nature Reserve features a 48.8-acre Provincially Significant Wetland, a cold-water trout stream known as Clear Creek, forest and small farm fields. Bordering the Land Trust's Jackson-Gunn Old Growth Forest, it enhances habitat connectivity in the Long Point Walsingham Forest Priority Place, an area that supports one of the highest densities of rare and endangered species in Canada.

Restoration plans include removing invasive species and planting native vegetation to expand a Carolinian forest, and further buffer the Clear Creek corridor.

This reserve honours the Alton family's long-standing commitment to preserving habitats and protecting biodiversity.





Clear Creek at Alton Family Nature Reserve

Pictured below: species found in the immediate area



Bald Eagle



Black Dash Skipper



Swamp Rose



Eastern Hognose



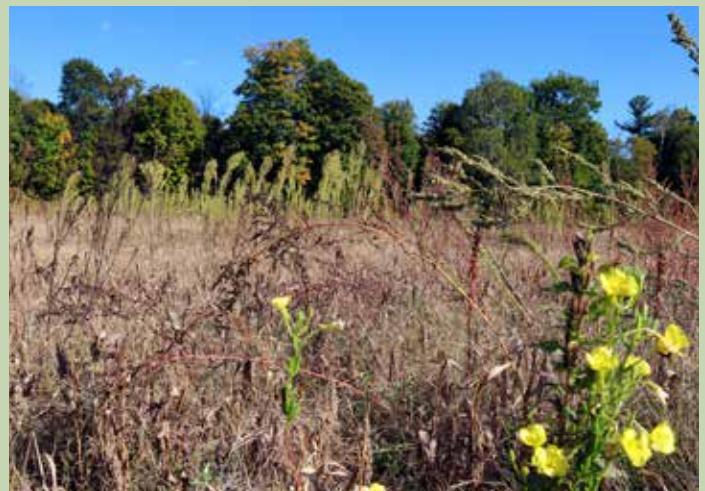
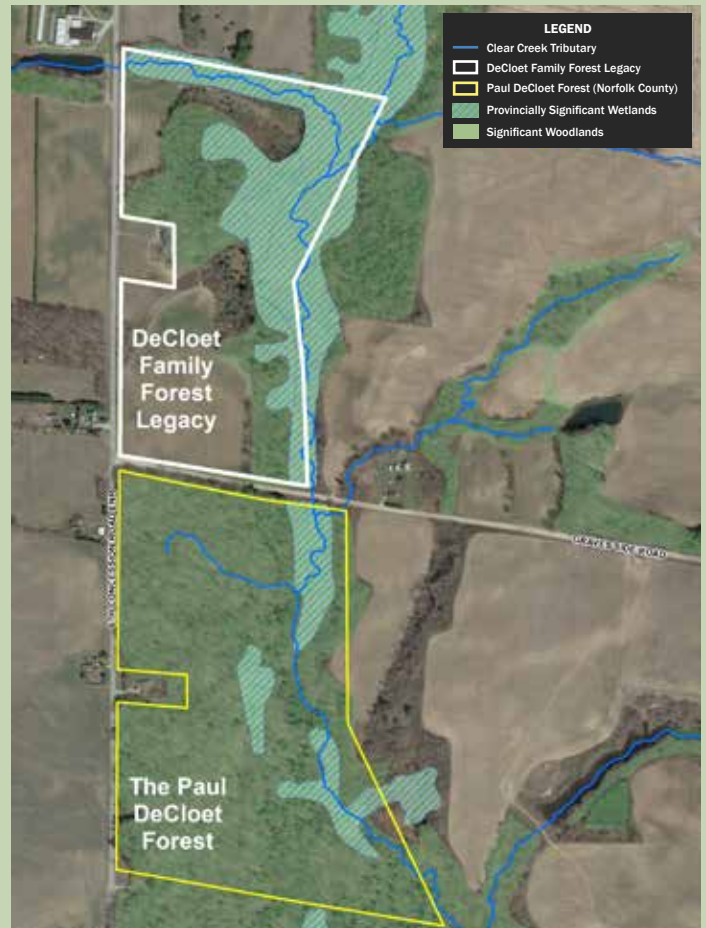
Newly Protected

DeCloet Family Forest Legacy

The 44.3-acre DeCloet Family Forest Legacy extends Norfolk County's Paul DeCloet Forest in the Clear Creek Valley, enhancing biodiversity with its mix of upland, lowland, and wetland habitats. A cold-water trout stream, a key tributary of Clear Creek, flows through the property providing a movement corridor for wildlife and supporting migratory birds and species at risk. Restoration plans include seeding native plants to transform former agricultural fields into diverse native meadow, further buffering the Clear Creek corridor.

The DeCloet Family Forest Legacy reflects the family's commitment to safeguarding Norfolk County's natural heritage for future generations.

In photo below: Paul DeCloet, Wendy Cridland - Executive Director, Ben DeCloet, Peter Carson - Board President.





Stand of hemlock at DeCloet Family Forest Legacy

Pictured below: species found in the immediate area



Indigo Bunting



Rose-breasted Grosbeak



Green Darner



Pumpkin Ash



Featured Nature Reserve

Walking Arboretum Tour at Spring Arbour Farm Nature Reserve

Spring Arbour Farm, along Venison Creek, provides key habitat for many birds, butterflies, moths, and bats. This year, LPBLT installed a self-guided arboretum tour—a serene walk through a collection of 13 native tree species.

Funded in part by:



TD Friends of the Environment Foundation



Featured tree species: Black Oak, Butternut, Hop-Hornbeam, Sassafras, Shagbark Hickory, Black Cherry, Blue Beech, Yellow Birch, Wild Crabapple, Eastern Flowering Dogwood, Witch-Hazel, Tulip Tree, and American Hazel.



The interpretative signs of the arboretum introduce visitors to the trees and many of the lepidoptera (butterflies and moths) that depend on these habitats. These incredible species collectively are what the Land Trust seeks to protect across a network of conserved areas.

As you explore, you'll learn about the ecological importance of these trees and their role in supporting the reserve's diverse inhabitants.

Explore the Outdoors



In 2024, our Explore the Outdoors program inspired community connection with nature through hands-on learning and activities. From monarch tagging to moth exploration and native gardening workshops to frog and turtle events, participants discovered the rich biodiversity of our region and the importance of protecting it.

2024 ETO Season

12

**Free educational
event sessions**

310

**Event participant
registrations**





Financial Summary

Assets

Current

Cash	\$238,250
Investments	\$3,703,446
Accounts receivable	\$423,998

Property \$9,465,473

Total Assets \$13,831,167

Liabilities

Current

Accounts payable	\$65,872
Deferred revenue	\$239,234

Total Liabilities \$305,106

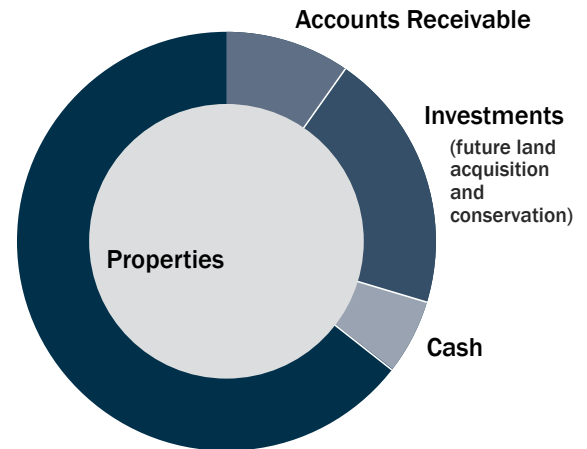
Net Assets

Unrestricted	\$461,154
Restricted	\$13,064,907

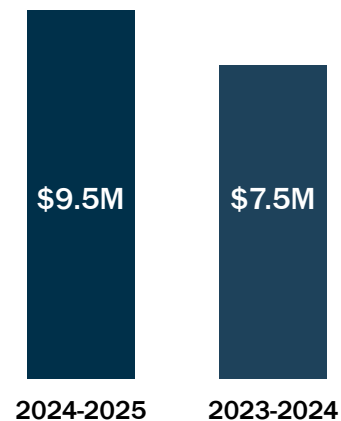
Total Net Assets \$13,526,061

Total Liabilities and Net Assets \$13,831,167

2024-2025 Assets



Properties



The following information is extracted from Long Point Basin Land Trust's April 1, 2024 through March 31, 2025 financial statements audited by Millard, Rouse & Rosebrugh LLP Chartered Accountants. To view the full audited statements, please visit our website at www.longpointlandtrust.ca.



Financial Summary

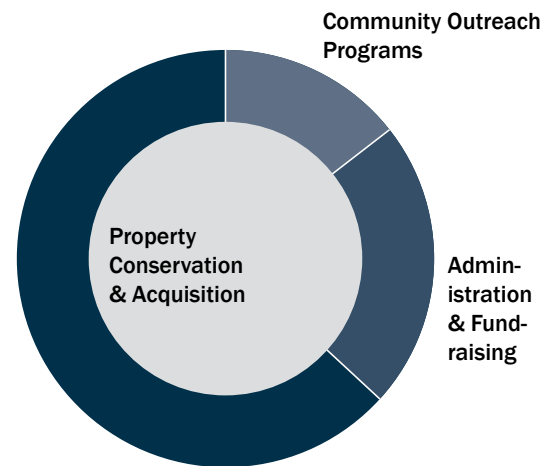
Revenue

Conservation Grants	\$1,851,121
Donations	\$691,077
Investment and Other Income	\$261,798
Total Revenue	\$2,803,996

Expenses

Property Conservation & Acquisition	\$471,654
Community Outreach Programs	\$122,384
Administration and Fundraising	\$167,960
Total Expenses	\$761,998
Excess of Revenue Over Expenses	\$2,041,998

How the dollars were spent
in 2024-2025



Wood Duck



Supporters & Partners

Thank you to our donors, partners, and sponsors for helping protect the biodiversity and habitats of the Long Point basin. And to the hundreds of individual donors and volunteers who support our work each day.

1000158606 Ontario Limited
Aqueduct Foundation
Carolinian Canada
Community Council
Ducks Unlimited Canada
Echo Foundation
Estate of Arthur Langford
Estate of Betty Chanyi
Estate of Michael Maloney
Government of Canada
Government of Ontario
Long Point Biosphere Region
Long Point Eco-Adventures
Long Point Region Conservation Authority
McLean Foundation
Nature Conservancy of Canada
Natural Resource Solutions Inc.
Norfolk Community Foundation

Norfolk County
Norfolk Field Naturalists
Ontario Conservation Accelerator
Ontario Land Trust Alliance
Ontario Trillium Foundation
Otter Valley Naturalists
Pano Cap Canada Limited
St. Williams Conservation Reserve
TD Friends of the Environment
Thames Talbot Land Trust
The Bradstreet Family Foundation
The James N. Allan Family Foundation
The Westaway Charitable Foundation
Wildlife Habitat Canada

Explore the Outdoors 2024 Sponsors:

Ontario Trillium Foundation
Toyotetsu Canada
Ottercreek Woodworks





Board of Directors

Thank you to our dedicated and engaged Board of Directors (2024-25) for continuing to guide the strategic vision and work of Long Point Basin Land Trust.

Peter Carson, President

Jason Bernardon, Treasurer

Stephen Kilbridge,
Vice President and Secretary

Mary Gartshore, Director

Janice Gilbert, Director

Len Grincevicius, Director

Audrey Heagy, Director

Joe Stephenson, Director

Kerrie Wilcox, Director

Remembering Betty Chanyi

Local conservation lost a champion in 2024 with the passing of Betty Chanyi. Betty was an active board member for 14 years until 2014 and she is deeply missed by her friends at LPBLT. Betty was diligent and effective in her role and a stickler for details.

As a lifelong resident of the area, Betty dedicated a huge amount of energy and enthusiasm to local nature conservation. We are incredibly grateful for Betty's contributions which included a legacy gift to protect nature in the Long Point basin.





Our Mission

To protect the rich biodiversity and habitats of the Long Point basin area.

Our Vision

A future where the habitats and biodiversity of the Long Point basin area are protected forever.

Contact Us

longpointlandtrust.ca

general@longpointlandtrust.ca

519.586.8309

Long Point Basin Land Trust
P.O. Box 468
Port Rowan, ON N0E 1M0

Facebook.com/lpblt

Instagram/lpblt

Linkedin.com/company/lpblt

[Youtube.com
/LongPointBasinLandTrust](https://Youtube.com/LongPointBasinLandTrust)